

Directions to Sailing Florida Fleet at The Renaissance Vinoy Resort:

South from Tampa:

Follow Interstate 275 South into St. Petersburg

*****PLEASE CALL***WHEN YOU REACH EXIT # 26, 54th AVE, see list below ****

Exit 23 A – Left Hand exit for 375 East, BayWalk and The Pier

Continue straight on 4th Avenue NE to Beach Drive (see map below).

Make a left on Beach Drive to 5th Avenue NE, then a right.

The marina is located across from the Renaissance Vinoy Resort: 501 5th Ave NE
St. Petersburg, 33701. The building located on the right is the Dock Master's office.
Temporary parking spaces are in front of the Dock Master's office for unloading.

North from Sarasota/Bradenton:

Follow Interstate 275 North over the Sunshine Skyway Bridge into St. Petersburg.

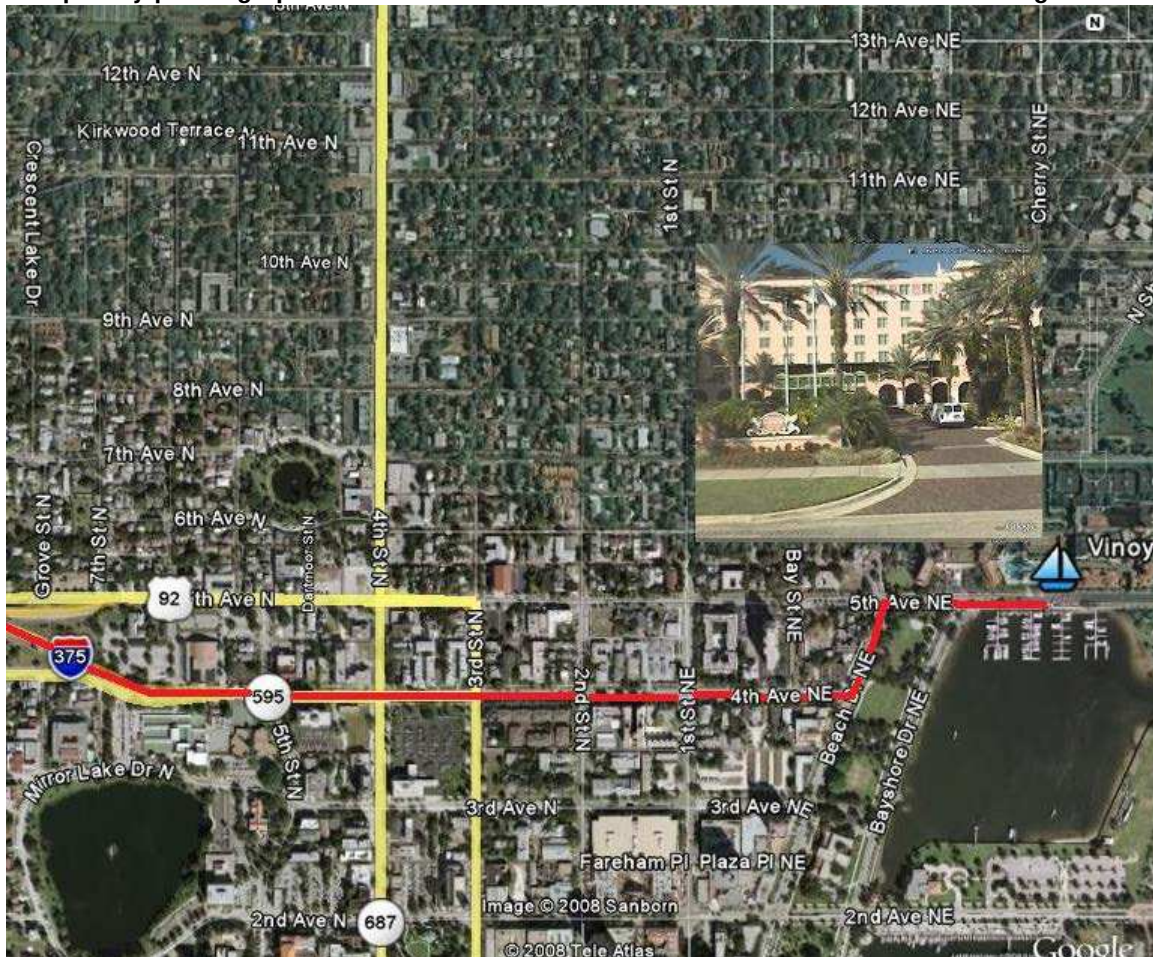
*****PLEASE CALL***WHEN YOU ARE OVER THE BRIDGE, see list below ****

Exit 23 – Right Hand exit for 375 East, The Pier

Continue straight on 4th Avenue NE to Beach Drive (see map below).

Make a left on Beach Drive to 5th Avenue NE, then a right.

The marina is located across from the Renaissance Vinoy Resort: 501 5th Ave NE
St. Petersburg, 33701. The building located on the right is the Dockmaster's office.
Temporary parking spaces are in front of the Dock Master's office for unloading.



Sailing Florida Charters 866.894.7245

**** Captain Patrick 727.580.3041 or Captain Kevin 843.408.9066 ****